



ALWATYAN
الوطيان



BUSINESS PROFILE



FOUND IN 2009

Alwatyan Hardwood Flooring Est

Started with a mission to revolutionize the wooden flooring industry in Saudi Arabia. Our expertise lies in offering and installing top-quality solid and engineered hardwood floors. Our ambition extends to popularizing the elegance and warmth of natural flooring across Saudi Arabia and the broader Gulf region.

In addition to hardwood, our portfolio includes a diverse range of indoor and outdoor solutions, including laminate, vinyl, wall and ceiling panels, wood plastic composite (WPC), and their upkeep. Our extensive selection of accessories and profiles, crafted from aluminum, wood, and plastic composite, are designed to enhance the luxury of your space.

We proudly stand as the sole distributors for renowned brands like Coswick, Mazzonetto, Quickstep, Kronopol, and CDECK in the Kingdom of Saudi Arabia (KSA). To date, we have contributed to over 5,000 residential and commercial projects across numerous Saudi cities, covering more than 1 million square meters.



DECKING

SIDING

ACOUSTIC PANELS

DECORATIVE P/

ING PANE

IRON

INGBONE

TRY

FLOORS

NI FLOO

OO

VISION

To create spaces that breathe life and elegance.

MISSION

Leveraging over 15 years of expertise, our mission is to deliver premium service and flooring solutions that blend quality and durability from across the globe, catering to your preferences and infusing your home with nature's warmth and elegance.

OUR CRITERIA

is based on the credibility, trust and guarantee of the services provided to the customer as well as to the ease of contracting and agreement with us. Your overall satisfaction is of our priorities that can not be overlooked.



OUR SERVICES

Solid and Engineering Natural Hardwood Floors

Mosaic Floors

WPC Floors

Sports Floors

Laminated Floors

Vinyl Floors

Sanding

Acoustic Panels

Ceiling Panels

Wall Panels

3-layer construction was created using the best research. It has increased stability and retains all its properties in a wider range of humidity.

Meticulously picked elegant tones made for a harmonised design

Protective finishes

Silk finish: environmentally clean finish with a slight matte sheen. Together with brushing it allows to preserve the natural beauty of wood, underlining its texture. Surface feels natural and pleasant to the touch.

Silk mat finish: creates a more matte surface, relaying the texture and the feeling of natural wood.

Lacquer finish: creates an impeccable leveled surface with a slight satin sheen and provides great wear-resistance.

MADE IN ITALY & BELARUS

NATURAL WOODEN FLOORS

SOLID AND ENGINEERING PLANKS





OAK, ASH AND AMERICAN WALNUT WOODS

MOSAIC FLOORS

Colour palette includes the best traditions and curious modern trends in wood flooring design: natural colours and noble tones of the aged wood, aqua colours and smoky shades.



MADE IN PORTUGAL

WOOD PLASTIC COMPOSITE

Designed to withstand the most demanding weather conditions, the CDECK composite is the ideal solution for outdoor decks, both in residential and commercial areas, including balconies, gardens, pools, terraces, marinas, etc..



In addition to its great strength and durability, this is a product of high aesthetic value that goes well with different architectural styles. Being made in Portugal and respecting high standards of quality and environmental standards, it is distinguished by the ease in assembly and the advantages of its floating fixture system.



01. Unique, like Nature

The singularity of Nature is what makes it so fascinating and inspiring, there are no two trees or two leaves alike.

Just like nature, our composite deck is a unique product that features random color variations, giving it an organic and natural finish.

Each board is a unique masterpiece, designed to bring natural beauty to any space.

02. Comfortable & Safe

Thanks to its shape and microtextured finish, our deck adapts to the anatomy of the feet, providing a unique and extremely pleasant sensation.

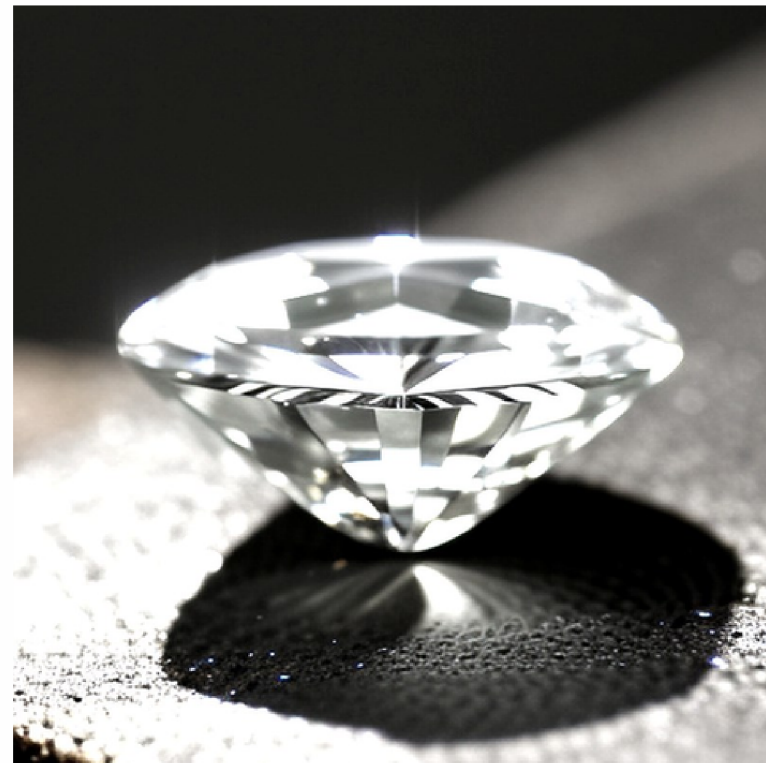
Free from splinters and screws, it offers maximum safety even when wet (Class C3).



COMPOSITE DECKING



03. Easy to Clean & Maintain
it features a waterproof coating that prevents the absorption of liquids and other substances, making cleaning and maintenance of the deck an easy and simple task. Its patented fastening system allows for individual opening and lifting of the deck boards, facilitating easy access for maintenance or deeper cleaning.



04. Durable & Long-lasting
Developed to withstand the most demanding weather conditions, manufactured with high-performance materials that ensure strength, color stability, and durability. These features, combined with its patented fixing system, provide the deck with a limited warranty of up to 25 years and a substantially longer expected lifespan.



05. Simple solution for challenging projects
Our composite deck range offers complete solutions for various applications. It utilizes the patented Quick-Fix fixing system, based on PVC and Aluminum profiles, clips, and special bases, which make installation up to 3x faster and allow for individual opening and lifting of the deck boards.



NATURAL SPORTS FLOORS

Coswick sports flooring is manufactured in compliance with the norms and standards of sports flooring production, including European EN 14904 standard, German DIN 18032-2, American ASTM F2772. This flooring line ensures comfort and ease during sports practices and team competitions in all major sports. All products are designed using the latest testing equipment (Artificial Athlete, Berlin-Stuttgart) and undergo a thorough, multi-step quality control process.



MADE IN BELGIUM & POLAND

LAMINATED FLOORS

COMBINING THE BEST IN PERFORMANCE AND BEAUTY

A water-resistant bathroom floor, a lively living room or a resilient kitchen floor: our laminate collection has a solution for everything you'd ever need. We would love to help with your project by searching for a floor that matches you and your home.

Resembling natural floors in look and feel, professionally imprinted with registered embossing.

 QUICK-STEP

 SWISS KRONO

LUXURY VINYL TILES

BEAUTY WITHOUT COMPROMISE

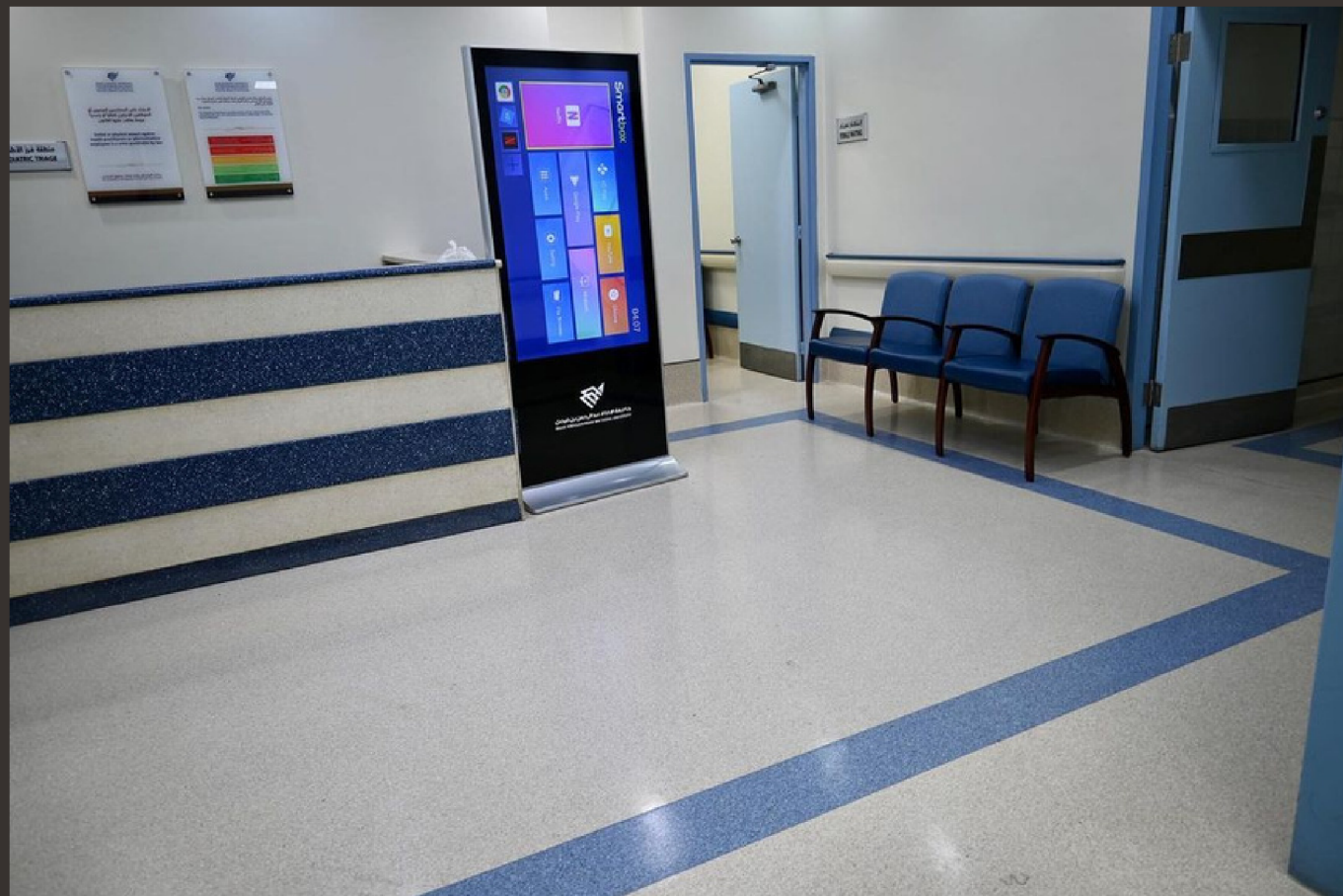
Live your best life without
worries. our luxury vinyl
flooring is designed to
withstand anything.

Combining style with
durability and performance.
vinyl floors are as practical
as they are beautiful.



DURABILITY AND SUSTIANBILITY

VINYL ROLLS



KING FAHAD HOSPITAL OF UNIVERSITY - VINYL REPLACEMENT PROJECT

Premier Flooring Solutions for Healthcare and Educational Centers

Slip Resistance: Enhanced grip to prevent accidents, ensuring the well-being of staff and students alike.

Chemical Resistance: Withstands harsh chemicals and spills, making it ideal for laboratories and medical facilities.

Low Fire Hazard: Engineered to resist combustion, contributing to a safer environment.

Stain Resistant: Easy to maintain pristine appearance despite spills or chemical exposure.

Easy to Clean: Simplifies maintenance and promotes hygiene with minimal effort.

Low Electrical and Thermal Conductivity: Provides insulation against electric shocks and heat, enhancing safety.

Low VOC Emission: Supports indoor air quality by minimizing the release of volatile organic compounds.

Water Resistant: Repels water, preventing damage and mold growth, essential for areas with high moisture exposure.

Our flooring solutions not only meet the rigorous demands of healthcare and educational settings but also contribute to a safer, cleaner, and more efficient environment. Trust our expertise to deliver flooring that combines performance, comfort, and durability.



WOOD COMPOSITE PERGOLA

Transform your outdoor space with our beautifully designed pergolas, offering extended living areas, customizable shade, year-round enjoyment, and a perfect setting for social gatherings, all while enhancing aesthetic appeal and supporting vibrant garden life.





SANDING

Restore the Elegance of Your Floors with Professional Sanding Services

Over time, scratches, dents, and stains can mar the beauty of your floors. Our expert sanding services are designed to rejuvenate and restore your floors to their original glory. Say goodbye to unsightly scratches, stubborn stains, and hazardous splinters.

Enhanced Longevity: Sanding not only refreshes the look of your floors but also significantly prolongs their lifespan. Scratches can act as weak points that allow moisture ingress, leading to wood movement and cupping. Our thorough sanding process removes these imperfections, and a new protective coating is applied to seal and shield the wood from future damage.

Revitalize Your Floors: Does your valuable flooring look pale and faded? Sanding can revitalize the rich, vibrant color of your wood, bringing life back to your space.

Trust our professional services to maintain the strength, beauty, and longevity of your floors. Experience a renewed foundation that not only looks spectacular but is also primed to withstand the tests of time and traffic.



PROJECTS



ARAMCO

MAIN ADMINISTRATION BUILDING
MEETING HALL - DHAHRAN





ARAMCO VENDORS



Saudi Aramco E-Reference No.

Registration Approval Letter

November 20, 2022

Attention : IBRAHIM HEJJI ALWATYAN WOODEN FLOOR EST.

CR Number : 2051038765
Supplier Type: Service Provider Only
Country : Saudi Arabia

We are pleased to inform you that IBRAHIM HEJJI ALWATYAN WOODEN FLOOR EST. is now registered in the Saudi Aramco Supplier Management System under Vendor Code No. _____ provided your company continues to meet all relevant Saudi Arabian and Saudi Aramco standards.

This registration, however, should not be construed as a commitment by Saudi Aramco to procure from you. Being registered as a supplier only grants you the opportunity along with other registered sources to respond to requests for quotations and proposals in accordance with Saudi Aramco's established policies and procedures. All procurement instruments including but not limited to service contracts, purchase agreements, or purchase orders will be issued based on the name and address included in your commercial registration (CR), as stated in your Supplier Registration.

Saudi Aramco wishes to remind you that being recognized as a supplier carries with it serious obligations and responsibilities to act in good and ethical manner. We wish to remind you of the Saudi Aramco Supplier Code of Conduct (SCOC) which you acknowledge. Failure to abide by the principles set forth in the SCOC can result in adverse actions being taken by Saudi Aramco against you including suspension of you as a supplier. Saudi Aramco also expects each of its suppliers to adhere to each of the requirements of any procurement instrument which might be placed and to act responsibly and reliably as a supply chain supplier. Material Suppliers should apply for Saudi Aramco Supplier Portal access by forwarding a request to SupplierHelpDesk@aramco.com and the Supplier Portal is an electronic business-to-business between Saudi Aramco and its suppliers and serves to improve the flow and accuracy of key supply chain information. For further information or assistance please contact the Saudi Aramco Supplier Help Desk by forwarding a request to SupplierHelpDesk@aramco.com or via the unified call center 800-116-1168 for In-Kingdom suppliers or +966 (11) 290-8950 for Out-of-Kingdom suppliers.



KFUPM

MEN & WOMEN SWIMMING POOLS
DECKING FLOORS





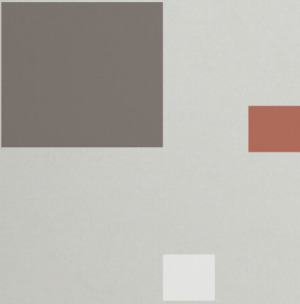
ALWATYAN
الوطنيان



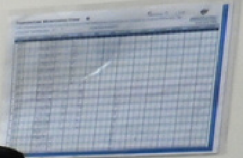
KING FAHAD HOSPITAL OF UNIVERSITY

VINYL FLOORING INSTALLATION & SELF-LEVELING





غرفة الكشف - أطفال
EXAM ROOM - PEDIATRIC



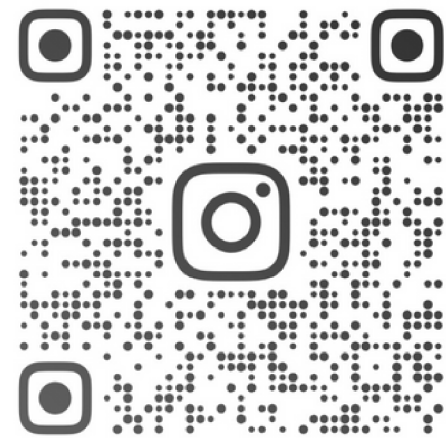
جامعة الإمام عبد الرحمن بن فيصل
IMAM ABDULRAHMAN BIN FAISAL UNIVERSITY
مستشفى الملك فهد الجامعي
King Fahad hospital of the university

KING FAHAD HOSPITAL OF UNIVERSITY

VINYL FLOORING INSTALLATION & SELF-LEVELING

OVER 5000 PROJECTS

SEE MORE



ALWATYANFLOORING

T R A D E M A R K S



SUCCESS PARTNERS





أرامكو السعودية
Saudi Aramco



البنك
السعودي
الفرنسي
Banque
Saudi
Fransi





شركة التشييد الإختصاصية للمقاولات
Building Specialized Contracting CO.



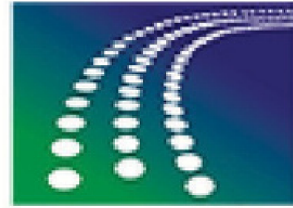
جامعة الملك فهد للبترول والمعادن
King Fahd University of Petroleum & Minerals



شركة إبراهيم محمد المانع وإخوانه
Ebrahim M. Al-Mana & Brothers Co.
(مساهمة مقفلة Closed Joint Stock)



شركة أنماط العمار للبناء المحدودة
Anmatt al-Amar Construction Co. Ltd.



مفرح الحربي وشركاه
MOFARREH ALHARBI & PARTNERS



العصفور
al-asfour



الأحريري
Ala'a Hariri
ARCHITECTURE & INTERIORS



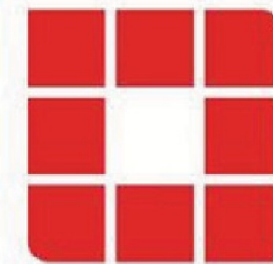
MAJD



خليج الدانة
DANA BAY



المجدوعي
ALMAJDOUIE



الخليجيون
للمطابخ



الحاج حسين علي رضا وشركاه المحدودة
Haji Husein Alireza & Co. Ltd.

ALWATYAN
الوطيان



ALL YOUR NEEDS
IN ONE PLACE

LOCATION
CONTACT INFO
BROCHURES
SOCIAL MEDIA PLATFORMS

Breath the nature
Spread the elegance